



PRESENTING

Neesa Mills

Painter, Healer, Priestess,  
Teacher



*“My artistry flows from an intention to know truth, revelation, and to explore soul wisdom.*

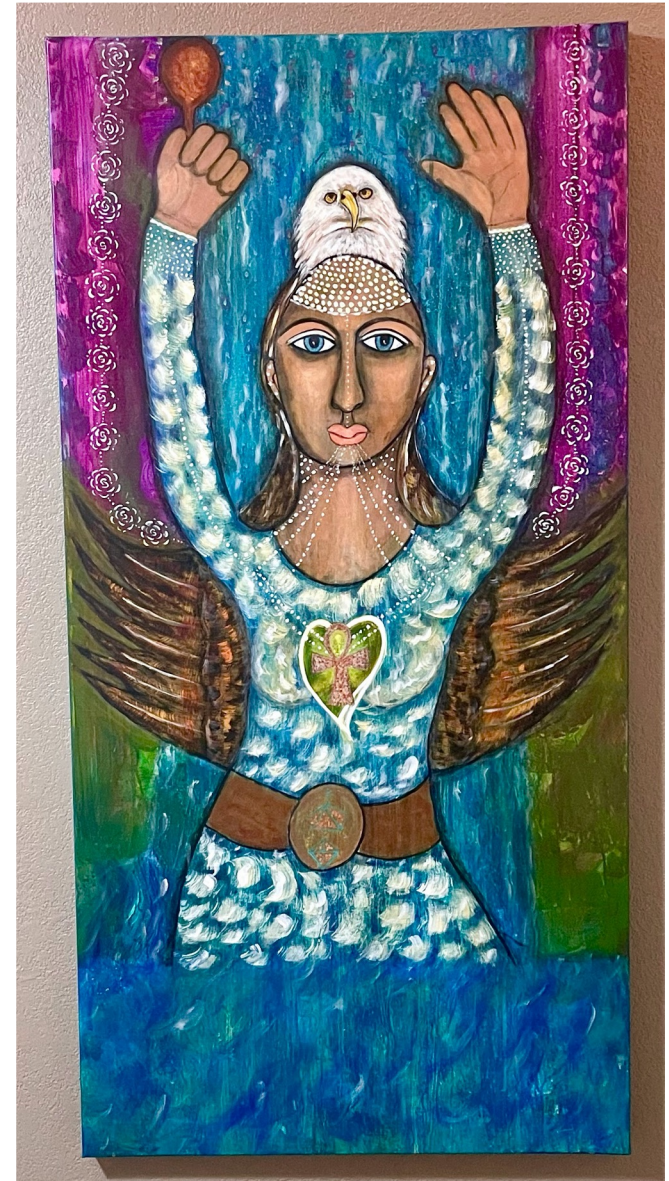
*...I am moved by what is revealed through the subconscious realms in response to my request for guidance from Divine Source.”*

~ Neesa Mills





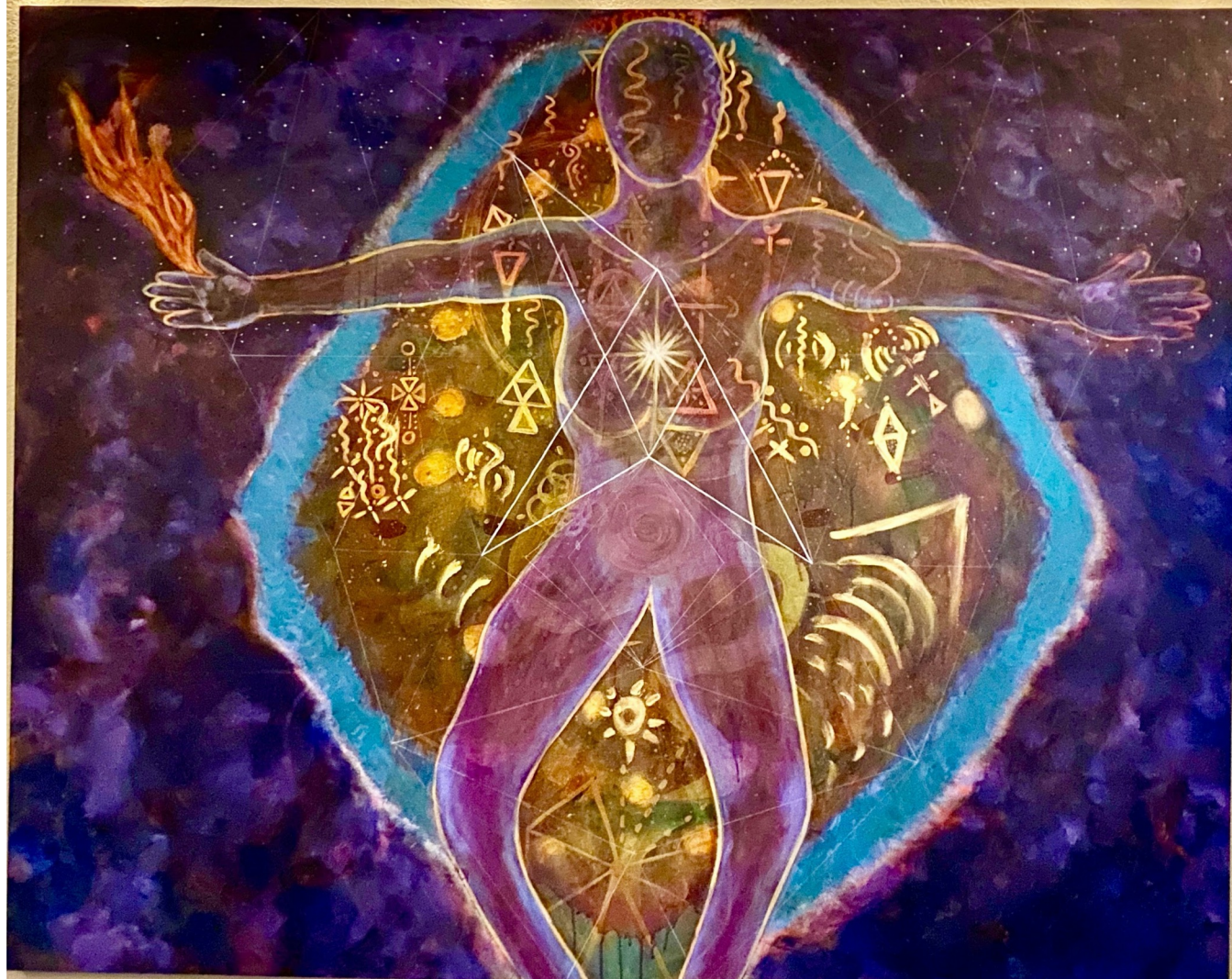
“Activating  
**POWER!**”





# What others see, feel, say. . .

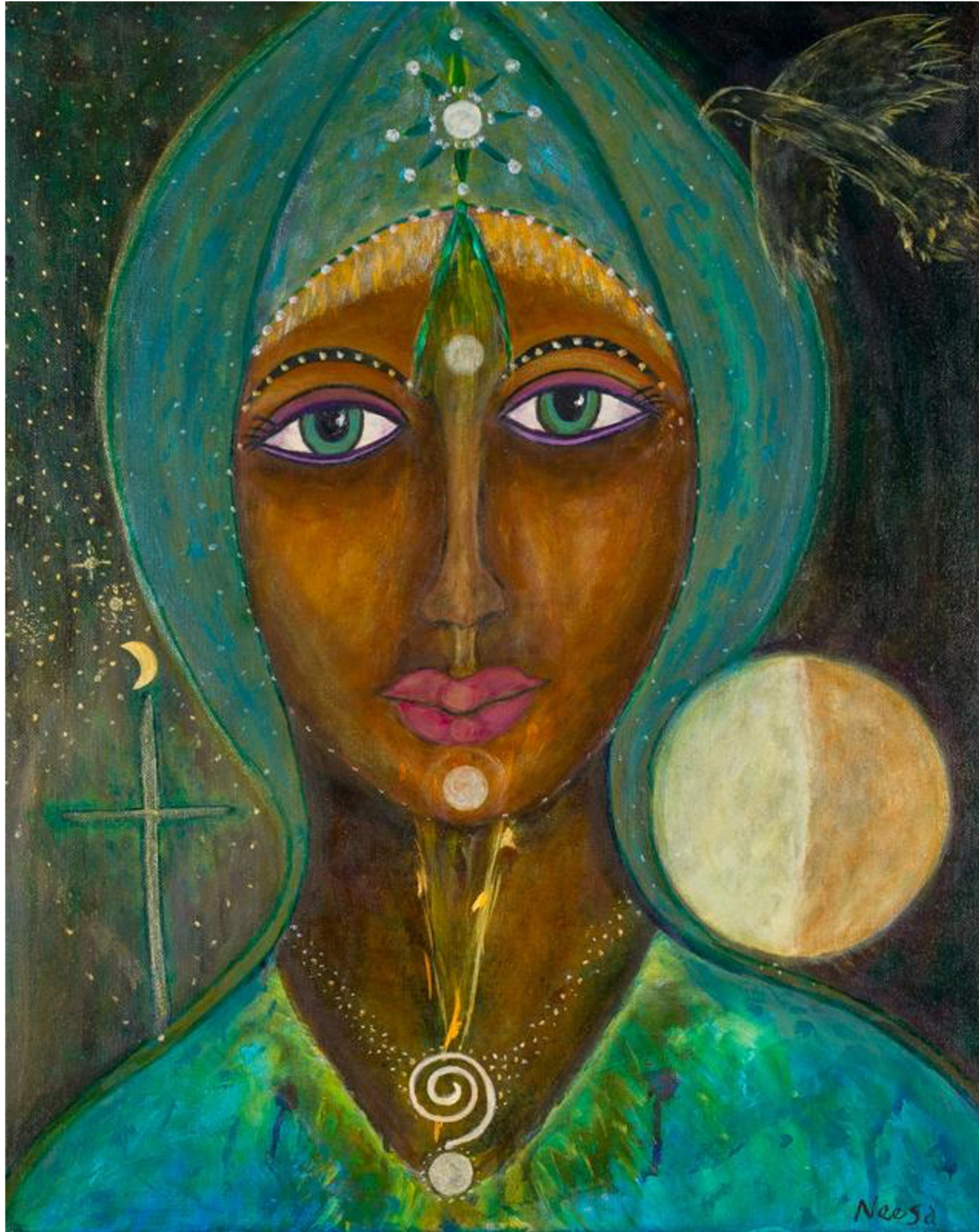
“primordial”



“star power”

“cosmic  
blueprint”





*“Magical  
goddess  
energy”*





*“evocative...”*



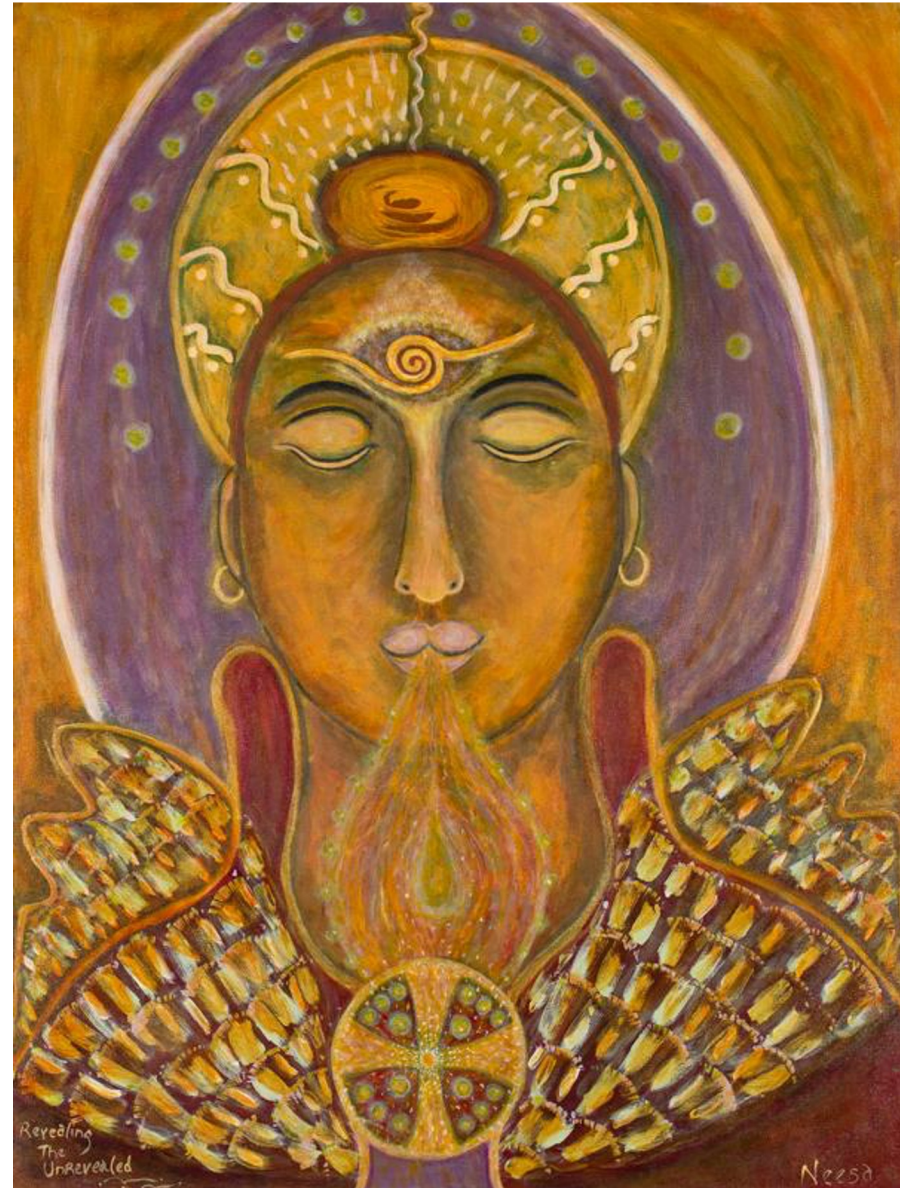
## “Ancient *knowing*”





*“Exploring symbols  
through art, such as that  
understood through  
archetypes, naturally  
deepens self-  
understanding and  
compassion ...”*

**~ Neesa Mills**





*“Art with intention is a path that helps build a healing bridge between the invisible world of energy and the tangible world of form.*

*I love to witness the feelings of freedom that arise when others catch this wave of understanding inside, which is why I teach Art as Soul Medicine™.”*

*~ Neesa Mills*





# Dr. Neesa Mills ~ Artist's Statement

*My artistry flows from an intention to know truth, revelation, and to explore Soul wisdom. With each creative process, I am moved by what is revealed through the subconscious realms in response to my request for guidance from Divine Source.*

*People speak to what is evoked by my work, using words like galactic, primordial, magical goddess energy, original cosmic blueprints, activators of remembrance and star power.*

*My approach to art-making creates alchemical healing and life breakthroughs; this informs all that I do as an energy healer, a body alignment specialist and a painter. When guiding individuals and groups, I always invite connection to the unseen and allow the amorphous flow of infinite possibility.*

*I am intensely curious about the Great Mystery and the unseen depths of what moves people to action, what stops them, and what manifests as dis-ease in the body-mind. I am compelled by art as a source of inquiry into the Self and who we are beyond our life stories – as spiritual beings woven into the larger web of life, uniquely expressing the themes of universal archetypes and symbols. Exploring these through art naturally deepens self-understanding and compassion for others by seeing how these symbols are part of the cosmological map of how we are all expressions of the unified field. Painting is a perfect medium for this.*



*My personal mission is fueled by the dream of each human being knowing their Divine Design – expressing as spiritual wealth, joy and love. Art with intention is a path that helps us to build a healing bridge between the invisible world of energy and the tangible world of form.*

*I love to witness these feelings of freedom arise in others who catch this wave of understanding inside, which is why I teach Art as Soul Medicine™, my branded approach which emerged after becoming certified as an Intentional Creativity Teacher™ with world-renowned artist Shiloh Sophia.*

*I began my art path in college, exploring photography, print-making and ceramics at the College of Art and Design at Alfred University. As my healing career as a chiropractor took off in the mid-1990s, and I began to lead Shamanic ceremonial healing events, my artistry re-emerged when I discovered a passion for creating Sacred Spaces with altars, color, paint and geometry. I created a series of light-encoded mandalas, now offered as luminous metal prints and silky scarves at [www.CreatorSoulMedicine.com](http://www.CreatorSoulMedicine.com).*